

TECHNOLOGY *eXchange*

For more information, visit our Web site
www.ltrc.lsu.edu/ltap/index.html

LPESA Spring Conference

Conference Recap and Highlights

Despite the inclimate weather, the Spring 2007 LPESA Conference held on May 3 and 4, 2007, was a great success. LTAP welcomed conference participants to the LA DOTD Transportation Training and Education Center (TTEC) on the LSU Campus in Baton Rouge, where the LTAP offices are also located. Participants from 23 cities and parishes and state

Evaluation of the conference suggested that sessions of particular interest included: Ethics in Public Works (an article on this topic is featured on page 6), Vegetation Management, Advances in CDL Training, and Local Road Safety. The fish fry was a great success thanks to Nortrax.

Nick Treadway from the Acadian Campus of the Louisiana Technical College demonstrated a truck driver training program and simulator in an 18-wheel mobile facility. Jerry Burns of the National Guard brought a heavy equipment operator simulator. These technologies and the opportunity to try them out generated a lot of interest from the participants and provided some potential alternatives to traditional training.

So much good information was shared by the speakers and participants that this entire LTAP Technology Exchange issue is devoted to the topics presented during the 1.5 day conference. If you missed the conference or attended and need additional contact information or resources, be sure to keep reading.

For more information on LPESA, please go to our Web site at www.lpesa.org. Contact information for speakers at the LPESA Spring Conference can be found in this newsletter on pages four and five or at www.lpesa.org/2007_speakerslist.pdf.



Fish fry, sponsored by Nortrax, at the LPESA Spring Conference.

and federal agencies attended. In addition, 13 associate members supported and attended the conference.

The conference included 17 sessions packed full of information on policy and legislation affecting local agencies as well as new technologies and materials.

In this issue:

Moving LPESA Forward - 2
Conference Sessions - 4

Nonpoint Sources of Pollution - 3
Ethics of a Public Servant - 6

A LOCAL TECHNICAL ASSISTANCE
PROGRAM OF THE LOUISIANA
TRANSPORTATION RESEARCH CENTER IN
COOPERATION WITH LADOTD, FHWA,
AND LSU.

Moving LPESA Forward

By George Mikhael
LPESA President

I would like to take this opportunity to thank those who elected me to serve a second year as the President of the Louisiana Parish Engineers and Supervisors Association. I promise to work harder on issues that can better serve our profession and local communities in Louisiana. I would also like to thank our associate members for their continuous support and sponsorship of events during our conferences and our officers, board members, and past presidents for their guidance and leadership.

With Marie Walsh's support at LTAP, we were able to get the LPESA Web site updated and corrected to reflect the continuing mission of LPESA.

We are now working on our Fall Conference that will be held in Lafayette, LA in September. Please come and join us to earn additional professional development hours and learn about solutions to work-related problems.

2007 Officers

President - George Mikhael, St. Mary Parish
Vice President - Dennis Woodward, Lincoln Parish
Treasurer - Elton Pickering, Beauregard Parish
Secretary - Marie B. Walsh, LTAP
Region 1 - Nguyen Phan, Orleans Parish
Region 2 - Perry Blanchard, Terrebonne Parish
Region 3 - Tim Marks, St. Landry Parish
Region 4 - Tommy Durrett, Claiborne Parish
Region 5 - Greg Humphries, Franklin Parish
Region 7 - Robert Bergeaux, Acadia Parish
Region 8 - Perry Holmes, Winn Parish
Municipal Member - William Cefalu
Past President - Wayne Winch
Members at Large:
Wayne Winch
Al Prater

Don Weathers
Bill Campbell
Richard Durrett

NACE Update

A recent NACE article highlights the importance of associations and their power to assist government in improving the lives of its citizens. George Webb, PE, the NACE president, noted that the NACE president-elect, Sue Miller, testified before the U.S. House of Representatives committee on Surface Transportation Policy and Revenue. During that testimony, she emphasized the need for additional revenue for safety issues, with particular attention needed on rural safety. Ms. Miller is a strong advocate for local road safety and an excellent spokesperson for local governments.

Recently, NACE has published in their bi-weekly newsletter a message urging congressional members to oppose the new "Waters of the U.S." bills. This bill will require parish authorities to obtain permits for all waterways in the state. Currently, the law is limited to navigable waters as stated in the Clean Water Act (CWA). A passage of the new bill will require CWA permits for infrastructure projects for stormwater ditches, settling ponds, sewers, and man-made ditches. Earlier, NACE had requested comments from state-county organizations, and Roland Dartez of the LA Police Jury Association contacted George Mikhael of LPESA for feedback. More information can be found in NACE Update, Volume 7, Number 11 in the Document Library of the LPESA Web site and is also available on the NACE Web site, www.countyengineers.org.

Send your updates, corrections and requests for additions to the site to Spencer Boatner at SpencerBoatner@dotd.la.gov.

Managing Nonpoint Sources of Pollution

By Jan Boydston

Environmental Scientist Senior

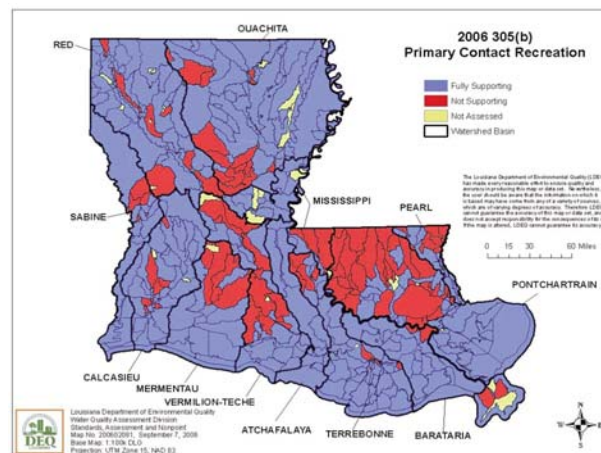
Louisiana Department of Environmental Quality

Louisiana's abundance of lakes, rivers and estuaries impacts the daily lives of all her citizens. Since the public relies upon these waters for drinking, recreation, and their livelihoods, both federal and state regulations require that all water bodies meet the fishable and swimmable goals of the Clean Water Act. Unfortunately, because of Nonpoint Source (NPS) pollution, many Louisiana water bodies do not fully meet their intended uses.

Nonpoint source (NPS) pollution comprises sediments, nutrients, metals, bacteria, and oil and grease from a variety of land-use activities, such as agriculture, forestry, construction sites, urban areas, home sewage systems, mining operations, and sand and gravel pits. NPS pollution accumulates in our water bodies when it rains, and storm water runoff enters rivers, lakes, and bayous without any treatment. For Louisiana to meet the goals of the Clean Water Act, we must address this type of pollution.

Louisiana Department of Environmental Quality (LDEQ) works with federal and state agencies, local governments, universities, and non-profit groups to reduce the amount of NPS entering our water bodies. Collaboratively, these organizations developed Best Management Practices (BMPs) for each of the land-use types that contribute to NPS pollution, and many agencies and cities are implementing these practices as part of their normal operating procedures.

During construction, BMPs such as silt fences, hay bales, erosion control mats, and native vegetation reduce the amount of sediment leaving a site and entering a storm water conveyance that flows into a water body. But in order for the practices to be effective, they have to be correctly installed and maintained over the life of the project. Oil and grease from trucks and heavy equipment need to be properly disposed of so that they do not leave the site and run into rivers or streams.



NPS pollution can be controlled if we all work together to keep pollutants on-site rather than letting them run off the site when it rains. Storm water permits and pollution prevention plans are two of the regulatory tools that LDEQ and USEPA use to control storm water runoff. All construction sites of one acre or greater are required to comply with LDEQ's storm water permits and have a pollution prevention plan on site.

More information about NPS requirements, as well as information about the quality of the water bodies across the state, can be found at www.deq.louisiana.gov. It is a good idea to know which water bodies may be impacted by the project if you are working on a road or highway project.

Louisiana life intertwines with water; it is a part of our culture and heritage, and we all want to preserve the crucial natural resources for future generations. You can do your part in this all important endeavor by preventing NPS pollution.

Contact Ms. Boydston at Jan.Boydston@LA.gov for more information, and visit www.deq.louisiana.gov or www.epa.gov/nps.

Conference Session Summaries

Advances in CDL Training

Nick Treadway

This session discussed the Commercial Driver's License (CDL) Simulator, which is part of the Louisiana Technical College – Acadian Campus, to prepare individuals for employment as professional tractor trailer drivers and to improve driver skills. DOTD has utilized the training program and simulator as part of their CD4 and driver training programs. LTC-Acadian Campus offers customized curriculum to meet your organization's needs.

Contact Nick at 337-788-7526 or thecdlguy@hotmail.com.

Driving Louisiana Forward

Jennifer Marusak

Driving Louisiana Forward proposes a public/private partnership to address Louisiana's \$14 Billion backlog of highway and bridge construction and maintenance. The presentation highlighted the extent of the problem facing Louisiana concerning our road and bridge infrastructure, how we compare to other states in key indicators, particularly revenue, and how the public/private partnership advocated by DLF intends to solve the problem.

Contact Jennifer at jmarusak@bellsouth.net, or visit www.drivinglouisianaforward.org.

Erosion Control with Redi-Rock

Dave Normand

Dave Normand talked with the group about RediRock, engineered stone used for retaining walls and other structural applications. He discussed its ease of use, variety of additional stones in addition to the three basic stones, and its affordability. He showed a wide variety of solutions, including retaining walls next to roads, ponds, and in landscaping.

Contact Dave at 225-926-8752, email dave@waskey.com, or go to www.ncma.org.

Heavy Equipment Oil Analysis

Charlie McCants, Louisiana Machinery

This presentation addressed how equipment owners can use a low-cost, low-tech solution to getting the most out of their heavy equipment budget. Rather than blindly following the manufacturer's recommended oil change and fluid service schedule, the savvy HE fleet manager can use oil analysis to let him know the wear condition of the machine's major components, as well as the status of the fluid itself, and whether it is still doing the job for which it was designed.

For more information, contact Charlie McCants at 985-536-0940 or cmccants@louisianamachinery.com, or go to www.louisianamachinery.com.

UBC and Engineered Lumber

Cathy Kaake

Cathy Kaake discussed the recent changes to the state building code and how engineered lumber can meet the code requirements and produce hurricane resistant housing. She explained how the new construction standards are based on engineering design and engineering to standards rather than age-old practices. She pointed to numerous examples where different kinds of buildings, concrete, masonry, and steel frame; in addition to wood, suffered catastrophic failures. These failures were due to a lack of standards and how all the materials were assembled, rather than to any failure of the materials themselves.

Contact Cathy at 504-443-4464, ext. 213, email her at ckaake@sfpa.org, or go to www.apawood.org, www.gp.com/build, or www.sfpa.org.

Geo Fabrics

Scott Manning

Scott Manning from Propex, Inc. described the many uses and distinct advantages geotextiles can provide for public works. A primary example of how geotextiles can help public works departments relates to controlling run-off from construction sites to prevent nonpoint source pollution. Scott noted Propex's Silt Fence product line applies specifically to this application. Other uses for geotextiles apply to a wide range of public works activities, such as road building, stormwater/erosion control, and landfill/waste containment.

Contact Violet at 225-273-3511 or vfarrow@ind-fab.com for more information.

Off-System Bridges

Gary Pentek, LA DOTD

Gary Pentek, DOTD Off-System Bridge Program Manager, discussed the system for funding bridge maintenance for "local" bridges that are not on either the state or federal maintenance programs. Gary explained how these projects get funded and the requirements parishes must meet to get their projects into the "off-system" program. He highlighted that a key element of getting a project approved is the parishes' level of funds match to the state and federal funds.

Contact Gary at GaryPentek@dotd.la.gov.

Vegetation Management

Rick Bayhi

Rick Bayhi joined us to discuss advances in managing roadside and drainage vegetation. Rick began by discussing where we were with chemical vegetation management in the 1980s. Next he discussed the advances in both the chemicals themselves and the application methods which have helped us manage vegetation less expensively and with greater environmental sensitivity. Rick went on to

discuss specifics about managing the most common drainage vegetation problems as well as roadside problems. He concluded by urging us to train our operators and to always observe safety when handling hazardous chemicals.

Contact Rick at 225-642-8752 or rbayhi@yahoo.com.

LA Youth Challenge Programs

CWO Jerry Burns

This session highlighted the Heavy Equipment (HE) Operator Simulator, which is part of the Louisiana Army National Guard Youth Challenge Program, to prepare individuals for employment as heavy equipment operators. The program is a short-term training course designed to prepare students to enter the heavy equipment and construction industry. The four month program includes instruction in operating diesel powered bulldozers, backhoes, skid steers, forklifts, and small cranes.

Contact Jerry at 225-319-4632, email jerry.burns1@us.army.mil, or go to www.ngyep.org/state/la.



Outside Employment for the Public Servant

By Michael Dupree
Louisiana Board of Ethics



It is essential for a public servant who wishes to provide compensated services to an outside source other than his governmental entity to have a basic understanding of the restrictions placed upon him by the Louisiana Code of Governmental Ethics.

The Louisiana Code of Governmental Ethics, Section 1111, prohibits public servants from performing any type of compensated services for an individual or entity that is considered a "prohibited source." Any person or legal entity that:

(1) has or is seeking a business, contractual, or financial relationship with the public servant's governmental employer;

(2) conducts operations or activities which are regulated by the public servant's agency; or

(3) has a substantial economic interest which may be substantially affected by the performance or nonperformance of the public servant's official job duties is considered a prohibited source.

Once an entity is classified as a prohibited source, the public servant is prohibited from performing any compensated service to that entity. It is a common misconception that if a public servant renders services to a prohibited source that are not related to the duties he provides his governmental employer, then the services are not prohibited by the statute. The Code prohibits the public servant from providing any service to the prohibited source regardless of when or what type of service it is. It is the relationship between the prohibited source and the public servant's employer that creates the conflict of interest and prohibits such outside employment.

In addition to being prohibited from performing compensated services for prohibited sources, public servants are also prohibited from receiving any thing of economic value as a gift or gratuity from a prohibited source.



Public servants are further prohibited from receiving any thing of economic value from a source other than his governmental employer for the performance of any service which is too closely related to his public duties. Even if the additional services a public servant wishes to provide to a person or legal entity are not the services normally provided as part of his job duties, there still

can be a violation of the statute. If the additional services to be provided are not identical to the serv-

ices a public servant normally provides to his governmental employer, but the services are so close or similar in nature to what is normally performed that



someone could draw an inference that the services are derived from the public servant's governmental duties, then such services could be prohibited.

Public servants who wish to engage in work outside of their governmental employment are urged to request an advisory opinion from the Louisiana Board of Ethics. The board, which is the public agency tasked with administering the Louisiana Code of Governmental Ethics to all public servants throughout the state, can provide advice as to how the current law may apply to a public servant's specific situation.

Mike Dupree is an attorney licensed to practice in the State of Louisiana and Federal District Courts in Louisiana. He has served with the Ethics Board for three years and also supervises the board's training program. He gives approximately 100 seminars a year on the Code of Ethics to various public agencies. Contact Mike at miked@ethics.state.la.us.

For Further Information

Louisiana Ethics Administration
www.ethics.state.la.us/

Publication Library
www.ethics.state.la.us/pub/index.html

LaHouse Tour

Dr. Claudette H. Reichel, LSU

Dr. Claudette Reichel continued the theme discussed by Curt McCarty of the Louisiana Uniform Construction Code Council and Cathy Kaake by providing a very enlightening tour of Louisiana House (LaHouse). LaHouse acts as a permanent, evolving showcase of building methods, materials and techniques. The house and yard contain a



teaching center and exhibit space that address national challenges and those issues most important to Louisiana,

including: national energy independence, unstable fuel costs, hurricanes and floods, asthma, mold and other indoor air hazards, and the challenges of a warm, humid climate.

For much more information on these and other topics, visit www.louisianahouse.org, or email Dr. Reichel at creichel@agcenter.lsu.edu.

Upcoming Events

Safe Routes to School (ITE Professional Development Program)

July 10-12, 2007
Baton Rouge (TTEC Building)

ITE Certification (PTOE, PTP, TOPS, TSOS)

October 20, 2007
Advanced Traffic Management/Emergency Operations Center
3773 Harding Blvd.
Baton Rouge, LA 70807

National Conference on Asset Management

November 6-8, 2007
Royal Sonesta Hotel New Orleans
300 Bourbon Street
New Orleans, LA 70130

From the ARTBA

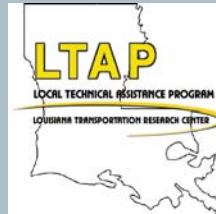
American Road & Transportation Builders Association

The cost of highway and street construction, increasing 15.3% in July, 2006, compared to prices in July, 2005. Year to date material prices are up an average of 14.4% compared to the first seven months of 2005. The average cost of manufacturing asphalt paving and block jumped 34.1%, cement manufacturing prices are up 12.2%, and ready-mix concrete is up 8.3%. Federal funding for SAFETEA-LU is set to increase 4.5% per year.



Don't forget to check out our video library catalog at www.ltrc.lsu.edu/ltap/info.html.

Need Technical Help? Contact LTAP



(225) 767-9117
(800) 595-4722 (in state)
(225) 767-9156 (fax)
www.ltrc.lsu.edu/ltap/cu.html

Dr. Marie B. Walsh
Director
David McFarland
Teaching Associate
Robert Breaux
Office Manager

Dean Tekell, P.E., P.T.O.E.
Local Road Safety (contractor)
Tom Buckley, P.E.
Spencer Boatner
Graduate Student
T.J. Dunlevy
Student Worker

LTAP Center
Louisiana Transportation Research Center
4099 Gourrier Ave.
Baton Rouge, Louisiana 70808

Publication Statement

Technology Exchange is published quarterly by the Louisiana Transportation Research Center. It is the newsletter of the Louisiana Local Technical Assistance Program. Any findings, conclusions, or recommendations presented in this newsletter are those of the authors and do not necessarily reflect those of LSU, LADOTD, or FHWA.

Newsletter Staff

Sher Creel, Executive Editor *Nick Champion*, Photographer
Alianna Giacone, Editor *Jenny Speights*, Webmaster

The Louisiana Local Technical Assistance Program was established at the Louisiana Transportation Research Center on the LSU campus in 1986. The purpose of the center is to provide technical materials, information, and training to help local government agencies in Louisiana maintain and improve their roads and bridges in a cost-effective manner. To accomplish this purpose, we publish a quarterly newsletter; conduct seminars, workshops, and mini-workshops covering various aspects of road and transportation issues; provide a lending library service of audio/visual programs; provide technical assistance through phone and mail-in requests relating to transportation technology; and undertake special projects of interest to municipalities in Louisiana. LTAP also coordinates the Louisiana Local Road Safety Program.